



# DEL MAR

LUXURY SERIES VINYL WINDOWS

---

**SOUTHWEST EDITION**

---



# DEL MAR

Over the past decade, Anlin has researched and developed the best vinyl replacement windows to meet the increasing energy efficiency needs for homes in the Southwest regions (Arizona, New Mexico, and Oklahoma). Del Mar's beauty is complemented with truly unique features to enhance energy efficiency, smooth operation and sound suppression.

## Exclusive Dealer Network

Del Mar windows are available only through Del Mar Gold Star Dealers. Each dealer has been qualified and selected for excellence in customer service and factory trained to represent Anlin's Del Mar series.

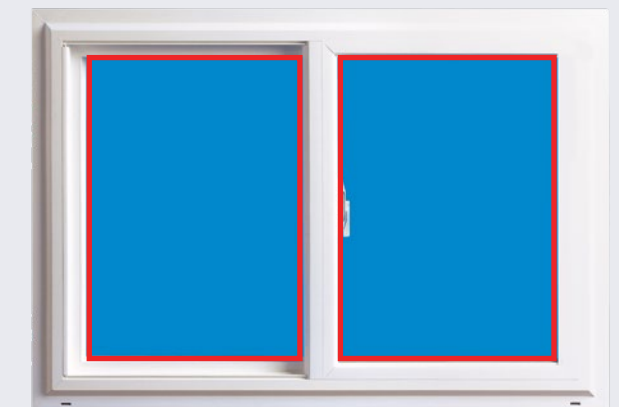


DEL MAR  
SOUTHWEST EDITION



## The Beauty of Even Sight Lines

Del Mar windows bring a balanced, symmetrical look to your home for enhanced curb appeal. The glass area is the same on both sides of the window.



Even Sight Lines

## Narrow Frame Depth

A narrow 2 7/8" frame depth means, in most homes, Del Mar windows can replace old windows and still allow window blinds to fit flush inside the window opening.

## Energy Saving Technology

Leading edge technology built into Del Mar windows make them **the most energy efficient dual pane windows in the industry.**

## Exceptional Styling and Quality

The features, components and craftsmanship designed and built into Del Mar windows will make you feel great about your home. It's quality that even increases resale value.

## A Superior Warranty

Del Mar windows are backed by the most inclusive lifetime warranty in the industry. Should your windows ever require warranty repairs, Anlin will make them, free of charge, for as long as you live in the home. Anlin's lifetime warranty coverage is also transferable to one subsequent homeowner should you sell your home. That's two lifetimes of truly worry-free windows.



# LEADING FEATURES

## Leading Edge Energy Technology

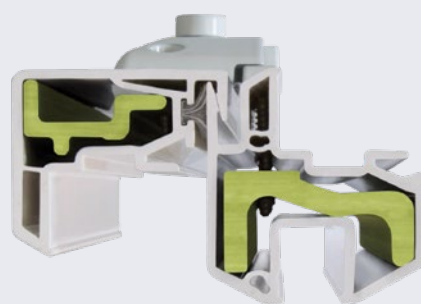
No other dual pane window compares to Del Mar's efficiency.

- ▶ Choice of two exclusive high performance glazing systems.

**QUADRATHERM™**  
ULTIMATE DUAL PANE INSULATION SYSTEM

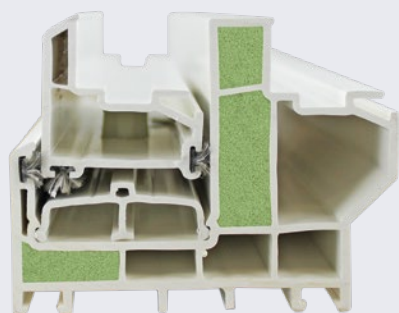
**INFINIT<sup>e</sup> PLUS™**  
HIGH PERFORMANCE GLAZING SYSTEM

- ▶ Innergy® Rigid Thermal Reinforcements are ultra-strong fiberglass thermal inserts that provide superior thermal insulation and strength inside the sash and frame.

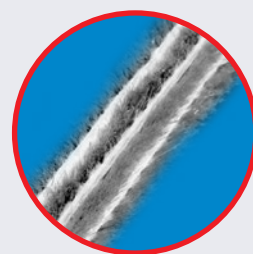


- ▶ Comfort-Core™, low conductance green foam inserted in specific dead air chambers for maximum efficiency.

**COMFORT-CORE™**  
Insulating Foam



- ▶ Sliding and hung windows have triple-fin weatherstrip with four areas of plush filler. This provides a weather-tight seal and blocks more wind, dirt, moisture and sound.



### Air Infiltration Comparison

CFM (cubic feet per minute)
<b>Del Mar Windows - Single Slider</b> <b>.02 CFM</b> of air leakage per minute
<b>Industry Requirement</b> <b>.30 CFM</b> of air leakage per minute

*Del Mar single slider windows with air infiltration rating of .02 CFM makes it 93% tighter than industry requirements.*

## Tilt-In Sash for Easy Cleaning

On single hung windows, which operate vertically, moving sashes tilt in for easy cleaning of the outside glass. This feature is especially appreciated on second floor windows.



## Lifetime Screen Frame

Anlin's Aluma-Force™ heavy duty screen frame is made to last with thick walls of extruded aluminum and the built-in pull rail provides easy removal.

**ALUMAFORCE™**



## Lift Assist for Smooth Operation

Constant force stainless coil balance system for hung windows counters the weight of the sash providing easy open and close operation.



## Easy to Open and Close

Sliding windows glide effortlessly, supported by a pair of rollers that have precision needle bearings and stainless steel axles for a lifetime of smooth operation.



## Superior Manufacturing Quality

The corners of Del Mar frames are precision mitered at 45 degrees, welded and cleaned by computer controlled technology. Every corner then receives a trained craftsman who completes a touch-up by hand for an exceptional smooth finish.



## Loaded with Features for Convenience and Security

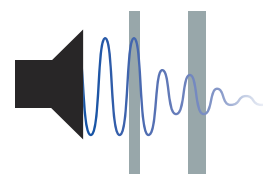
Built-in ventilation latches and anti-lift stops work together to allow your windows to be open a few inches for ventilation without being able to be opened further, and without being able to be lifted out of the frame.



**Reduce up to 50% of outside noise!**  
*Compared to typical builder grade windows.*

## Sound Suppression Technology

Home is where you want the outside clamor to give way to indoor calm. Del Mar windows come standard with sound suppression technology engineered to reduce exterior noise, making your home a quieter, more comfortable place to live.



*Dissimilar thickness glass breaks down sound waves entering your home, substantially reducing outside noise.*



# SAVING ENERGY

SPENDING LESS ON ENERGY LETS YOU SPEND MORE ON THE THINGS YOU LOVE.



Two things can send energy bills skyward: heat passing from one side of your window to the other; and solar heat sneaking into your home via the greenhouse effect on hot, sunny days. All energy efficient windows try to reduce one or both of these energy-sapping effects. For homeowners looking to replace their windows, there are two essential performance measurements to consider. The first is U-Factor, and the second is Solar Heat Gain Coefficient (SHGC).

U-Factor is the name for the standard measurement of a window's resistance to heat being transferred through the window. The lower the number, the greater the insulation capability of the window.

Solar Heat Gain Coefficient (SHGC) is the name for the standard measurement of a window's ability to keep solar heat from passing through the glass and warming your home via the greenhouse effect. The lower the number, the greater the job the window does of rejecting solar heat gain.



## Energy Ratings for Del Mar Windows

The National Fenestration Rating Council (NFRC) provides independently tested measurements of both U-Factor and Solar Heat Gain Coefficient. This determines the energy efficiency ratings of windows.

Del Mar windows offer the best U-Factor and Solar Heat Gain Coefficient - exceeding Energy Star requirements. With Del Mar's industry leading thermal performance, you can enjoy maximum comfort and energy savings.

As an example, here are the thermal performance numbers for Del Mar single hung and sliding windows.

## Del Mar Thermal Performance Numbers

Window & Insulated Glass System	Total Unit U-Factor	Solar Heat Gain Coefficient (SHGC)
QUADRATHERM™ with Argon Gas	0.22	0.22
INFINIT-e PLUS™ with Argon Gas	0.26	0.22

For U-Factor and SHGC, lower numbers equate to higher energy efficiency.

All Anlin QuadraTherm™ and Infit-e Plus™ insulated glass systems have been tested to block the transmittance of ultraviolet (UV) light by 95%. You will find the U-Factor, SHGC and UV numbers for every Anlin window at [anlin.com](http://anlin.com).

## Del Mar Windows Offer a Choice of Two High-Tech Insulated Glass Systems that Exceed Energy Star Requirements



DEL MAR  
SOUTHWEST EDITION

### (Standard) INFINIT-e PLUS™ HIGH PERFORMANCE GLAZING SYSTEM

It's the science behind maximum energy efficiency and comfort.

- 1 A triple-layer silver metal coating, invisible to the human eye, reflects and effectively blocks much of the solar heat gain from a hot summer sun.
- 2 Patented Platinum Elite™ spacer slows down heat and cold transfer through the window.
- 3 Argon Gas between the panes of glass slows the transfer of heat through the window.
- 4 Easy-clean coating on the outside glass helps your windows stay cleaner longer.

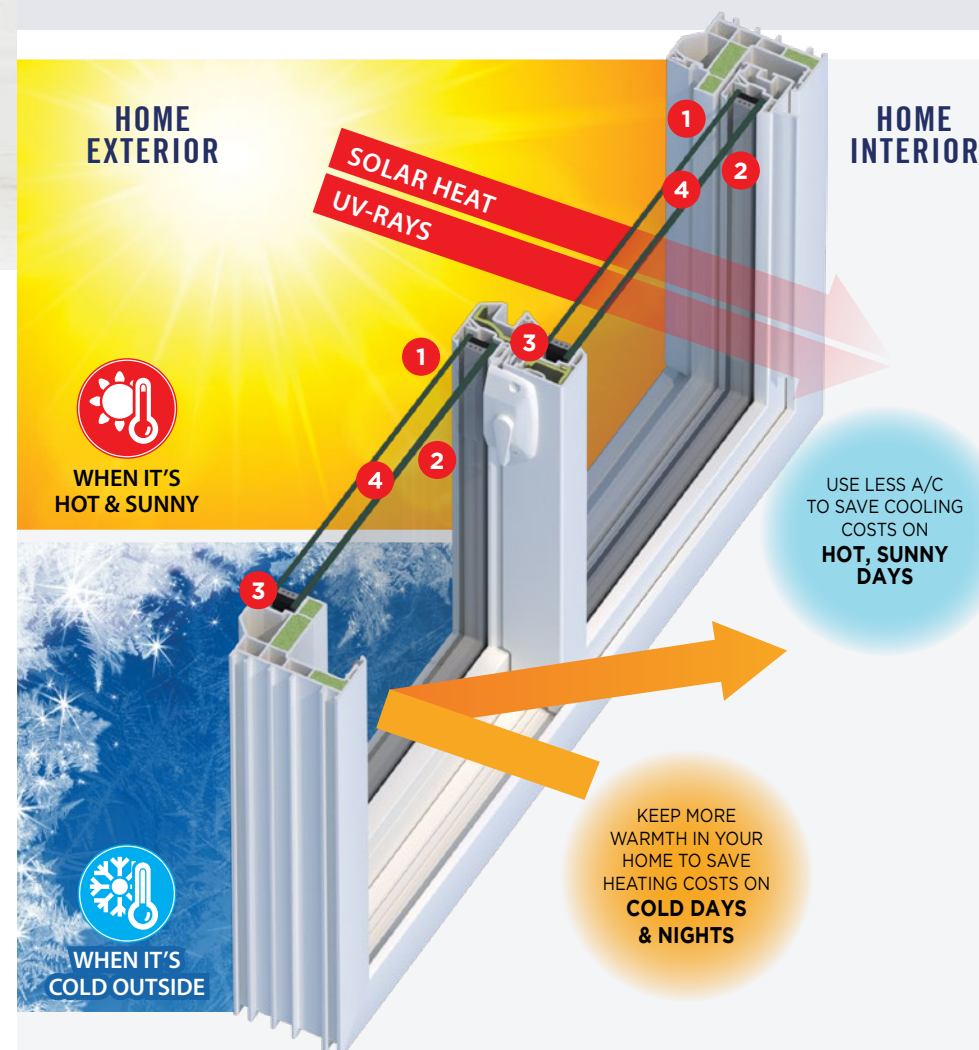
HOME EXTERIOR

HOME INTERIOR



HOME EXTERIOR

HOME INTERIOR



(Optional)

### QUADRATHERM™ ULTIMATE DUAL PANE INSULATION SYSTEM

The industry's most energy efficient dual pane window.

- 1 Patented multi-layer solar reflective coating on the outside glass provides the ultimate defense against solar heat gain.
- 2 Patented multi-layer heat retention coating on the inside glass helps keep more warmth inside your home on cold days and nights.
- 3 Patented Platinum Elite™ spacer slows down heat and cold transfer through the window.
- 4 Argon Gas between the panes of glass slows the transfer of heat through the window.

# WITH DEL MAR WINDOWS THE CHOICE IS YOURS



**DEL MAR**  
SOUTHWEST EDITION



## Lock Options

Both lock types available on Del Mar windows pass the forced entry test.

### ► Pull-Tight Cam Lock

(Standard in white or tan.  
Optional in bronze, brushed nickel, and polished brass.)

Pull the window sashes together for a weather tight seal.



Bronze



Brushed Nickel



Polished Brass

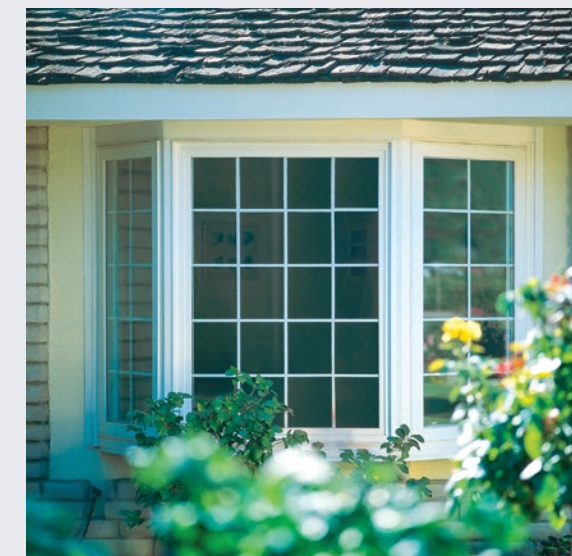
### ► True Action Lock

This optional system automatically locks when the sash is closed. Available in white, tan, bronze, brushed nickel, and polished brass.



## Complementary Products

Complementary products have a 3 1/4" frame depth to accommodate the function of its operating styles and can be combined with any Del Mar window.



Bay and bow windows make a home special. They practically bring the outdoors right inside, so rooms feel larger and lighter.



Garden windows offer a popular way to brighten a kitchen or bathroom, opening the room to more sunlight and providing a perfect shelf for plants and décor.



Double Hung

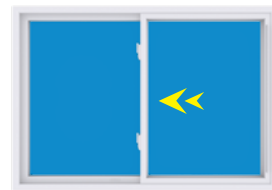


Casement

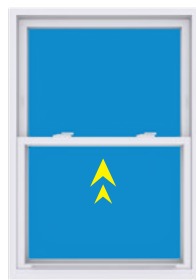


Awning

## Operating Styles and Configurations That Will Transform Your Home



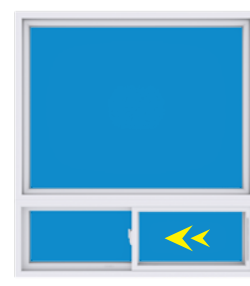
Single Slider



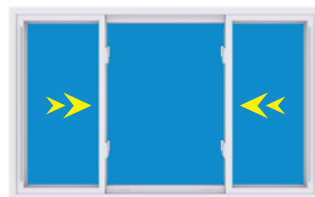
Single Hung



Picture



Picture Over Slider



SS / Picture / SS



SH / Picture / SH



Geometric

## Exterior Color Options

Love the look of your home right down to the color of your window frames. With Anlin, you've got a lot of choices!



White  
Exterior and Interior

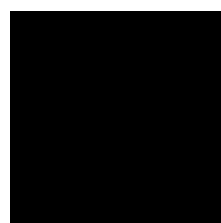


Tan  
Exterior and Interior

# THERMACOAT™

SOLAR REFLECTIVE COLORS

Exterior colors that bring out the designer in you.



Architectural Black



Architectural Bronze



Architectural Silver



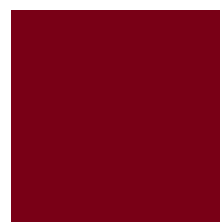
Classic Gray



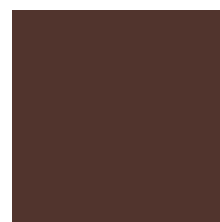
Espresso



Taupe



Red Pepper



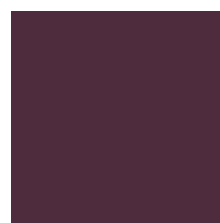
Rose Wood



Desert Tan



Sandstone



Divine Wine



Forest Green

Colors shown are printed representations of ThermaCoat™ Solar Reflective Colors for comparison purposes only. For actual color, view ThermaCoat™ vinyl samples (provided by dealer) in natural daylight.



## Grid Styles and Patterns

Grids allow you to create just the right architectural look that you want for your home.

### Grid Styles



5/8" Flat



5/8" Sculptured

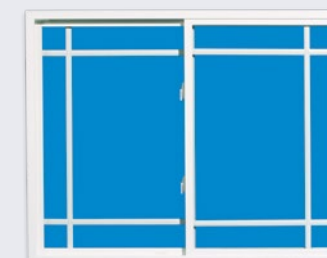


1" Sculptured

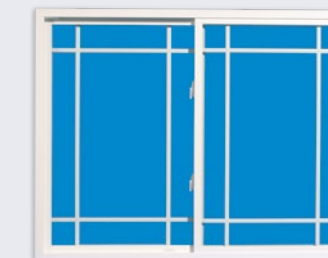
### Grid Patterns



Colonial



Perimeter

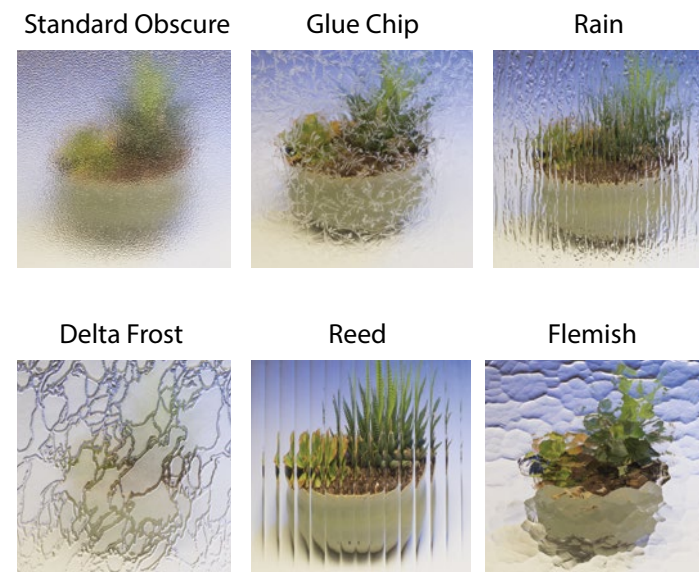


Queen Anne

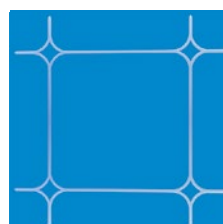


### Decorative Glass Options

► Del Mar windows are available with any of the following decorative glass patterns.



► Diamond cut decorative beveled glass, available in a variety of styles and patterns.



### Tinted Solar Reflective Technology

The ultimate technology for combating extreme solar heat, tinted triple silver coating is engineered to reflect the sun where it beats the hottest. Whether it's the searing sun of the Southwest regions or anywhere west facing windows are exposed to a scorching afternoon sun, Tinted Solar Reflective Technology dramatically reduces solar heat and lowers cooling costs.

*Del Mar single slider windows with Tinted Solar Reflective Technology have a Solar Heat Gain Coefficient (SHGC) of 0.14.*

### Safety / Tempered Glass

All Anlin replacement windows can be ordered with optional tempered glass, which may reduce the potential for serious injury when broken.

### Security / Sash Dead Bolt

Optional 1/4" stainless steel sash dead bolt provides added security on sliding windows.



### Frame Options

Choose a frame style that gives your home the look you love.

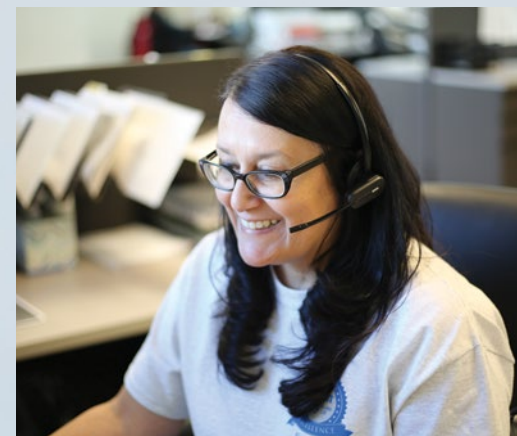


Block

Contemporary

Brickmould

“From the way we build your windows and patio doors to the way we stand behind them – we look forward to creating an exceptional experience.”



### Recognized for Manufacturing Excellence

Since Anlin Windows was founded in 1990, we've continually invested in leading edge product design, technology and manufacturing practices. As a result, Anlin Window Systems received numerous awards including Industrial Business of the Year by the U.S. House of Representatives and Top 100 U.S. Manufacturer by Window & Door Magazine.



All Anlin windows and doors are AAMA and NFRC certified, and ENERGY STAR qualified.







# DEL MAR

---

## SOUTHWEST EDITION

---

- ▶ Choice of two exclusive high performance glazing systems: QuadraTherm™ or Infnit-e Plus™
- ▶ Sound Suppression Technology
- ▶ The beauty of even sight lines
- ▶ Superior quality and craftsmanship
- ▶ The industry's most inclusive warranty
- ▶ Designed and built for Southwest regions



Anlin Window Systems • 1665 Tollhouse Rd. • Clovis, CA 93611  
800-287-7996 • [www.anlin.com](http://www.anlin.com)