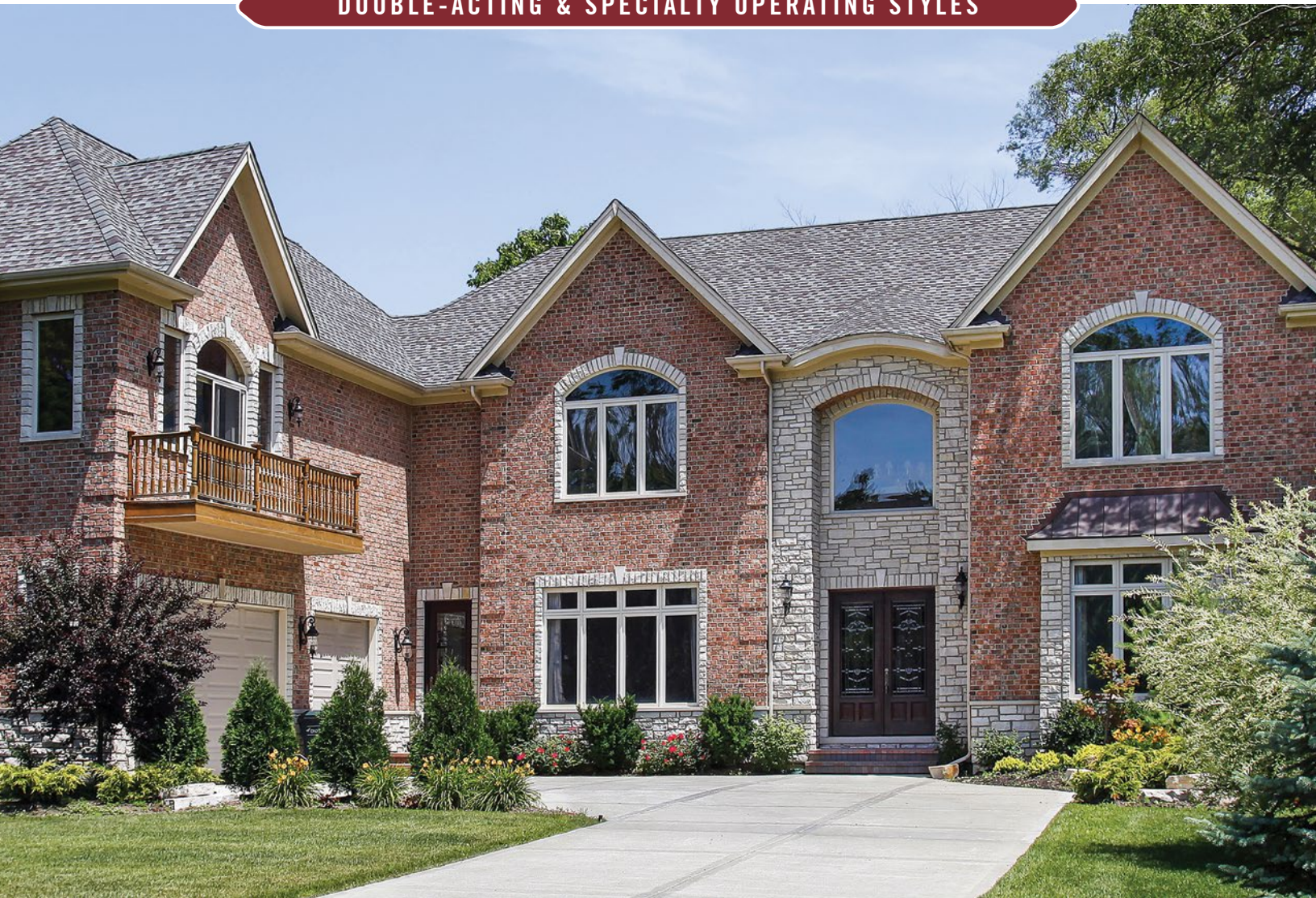




CORONADO

PREMIUM COMPANION VINYL WINDOWS

DOUBLE-ACTING & SPECIALTY OPERATING STYLES



CORONADO

Anlin's Coronado series includes double slider, double hung, casement, awning, bay and bow and garden windows. While providing the additional window depth required for these operating styles, Coronado windows are designed to look "right at home" when paired with windows from Anlin's Del Mar, Catalina and Panoramic series.

A Select Dealer Network

To ensure your satisfaction, Coronado windows are only sold and installed by a limited number of authorized dealers who have been trained and certified by Anlin.



Energy Saving Technology

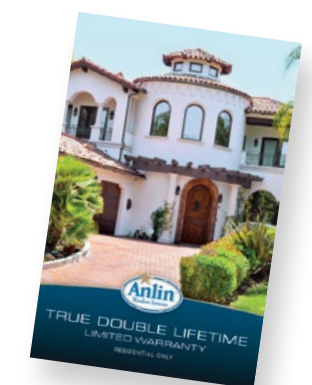
Coronado windows are designed and built for optimum performance, using the latest energy saving technology, for the specific needs in the Western region.

Exceptional Styling and Quality

The features, components and craftsmanship that are designed and built into Coronado windows will make you feel great about your home. It's quality that even increases resale value.

A Superior Warranty

Coronado windows are backed by the most inclusive lifetime warranty in the industry. Should your windows ever require warranty repairs, Anlin will make them, free of charge, for as long as you live in the home. Anlin's lifetime warranty coverage is also transferable to one subsequent homeowner should you sell your home. That's two lifetimes of truly worry-free windows.



BETTER PERFORMANCE IS DESIGNED INTO EVERY FEATURE.

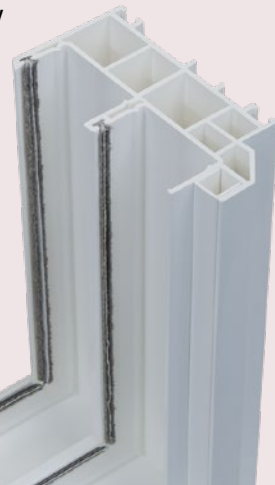
LEADING FEATURES



CORONADO
PREMIUM COMPANION VINYL WINDOWS

Saving Energy

- ▶ Thicker vinyl and more inner chambers help reduce the flow of heat and cold through the frame.

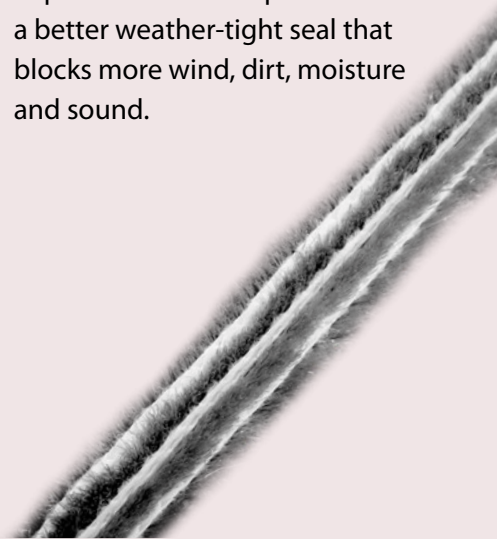


- ▶ Choice of two exclusive high performance glazing systems.

QUADRATHERM™
ULTIMATE DUAL PANE INSULATION SYSTEM

INFINIT-e PLUS™
HIGH PERFORMANCE GLAZING SYSTEM

- ▶ Triple fin weatherstrip creates a better weather-tight seal that blocks more wind, dirt, moisture and sound.



Smooth Operation and Easy-Clean Glass

- ▶ Double sliding windows are supported by 4 Celcon rollers and 4 extra large stainless steel axles for a lifetime of smooth operation.



Sliding Window Rollers

- ▶ Coronado windows built with the Infinet-e Plus™ insulated glass units come standard with an easy-clean coating on the outside of the glass. This feature makes the outside windows easier to clean and helps them stay cleaner longer.

With easy-clean coating | *Without easy-clean coating*



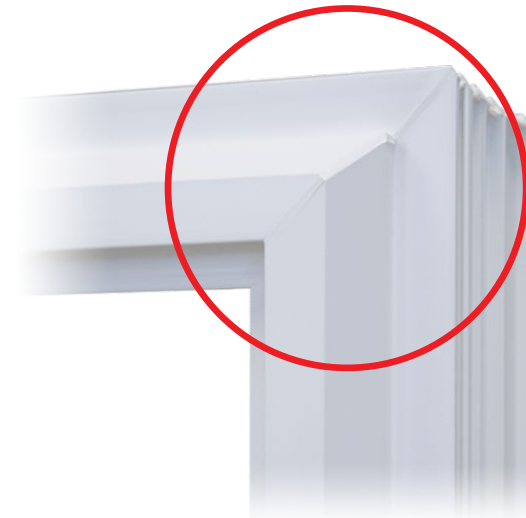
- ▶ Double hung windows features sashes that tilt in for easy cleaning of the outside glass and a stainless steel constant-force balance system that ensures easy, smooth operation.



Tilt-in Feature



Window Balance System



Appearance and Value

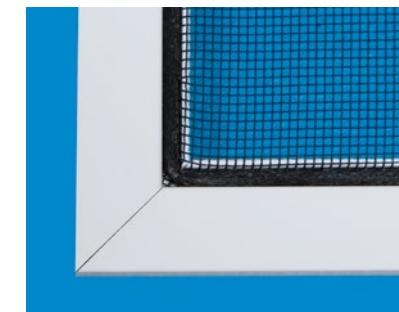
- ▶ The corners of Coronado frames are precision mitered at 45 degrees, welded and cleaned by computer-controlled technology. Every corner then receives a trained craftsman who completes a touch-up by hand for an exceptional smooth finish.

- ▶ Frames and sashes with matching beveled accents create a more polished, sleek and sophisticated look.

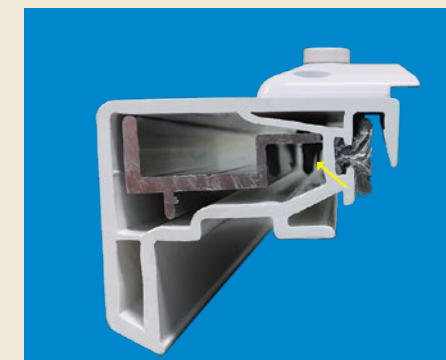


- ▶ Enjoy the visual appeal and balance of even sight lines. This means that when you look at the window, the size and shape of the glass area are the same on both sides of the window.

- ▶ Coronado screens have mitered corners to match the frames. The appearance is far more elegant than screens made with square, plastic corner inserts.



Security



- ▶ All lock hardware is securely attached to metal reinforcement hidden inside the vinyl.



- ▶ Built-in ventilation latches allow your windows to be open a few inches for ventilation without being able to be opened further.



- ▶ Optional 1/4" stainless steel sash dead bolt provides added security on sliding windows.

SAVING ENERGY

SPENDING LESS ON ENERGY LETS YOU SPEND MORE ON THE THINGS YOU LOVE.



Two things can send energy bills skyward: heat passing from one side of your window to the other; and solar heat sneaking into your home via the greenhouse effect on hot, sunny days. All energy efficient windows try to reduce one or both of these energy-sapping effects. For homeowners looking to replace their windows, there are two essential performance measurements to consider. The first is U-Factor, and the second is Solar Heat Gain Coefficient (SHGC).

U-Factor is the name for the standard measurement of a window's resistance to heat being transferred through the window. The lower the number, the greater the insulation capability of the window.

Solar Heat Gain Coefficient (SHGC) is the name for the standard measurement of a window's ability to keep solar heat from passing through the glass and warming your home via the greenhouse effect. The lower the number, the greater the job the window does of rejecting solar heat gain.



Energy Ratings for Coronado Windows

The National Fenestration Rating Council (NFRC) provides independently tested measurements of both U-Factor and Solar Heat Gain Coefficient. This determines the energy efficiency ratings of windows.

As an example, here are the thermal performance numbers for Coronado double slider windows. (For both U-Factor and SHGC, the smaller the number, the more energy efficient the window.)

Coronado Thermal Performance Numbers

Window & Insulated Glass System	Total Unit U-Factor	Solar Heat Gain Coefficient (SHGC)
QUADRATHERM™ with Argon Gas	0.24	0.21
INFINIT-e PLUS™ with Argon Gas	0.27	0.21
INFINIT-e PLUS™ without Argon Gas	0.31	0.21

All Anlin QuadraTherm™ and Infinet-e Plus™ insulated glass systems have been tested to block the transmittance of ultraviolet (UV) light by 95%. You will find the U-Factor, SHGC and UV numbers for every Anlin window at anlin.com.



CORONADO
PREMIUM COMPANION VINYL WINDOWS

Coronado Windows Offer a Choice of Two High-Tech Insulated Glass Systems that Exceed Energy Star Requirements

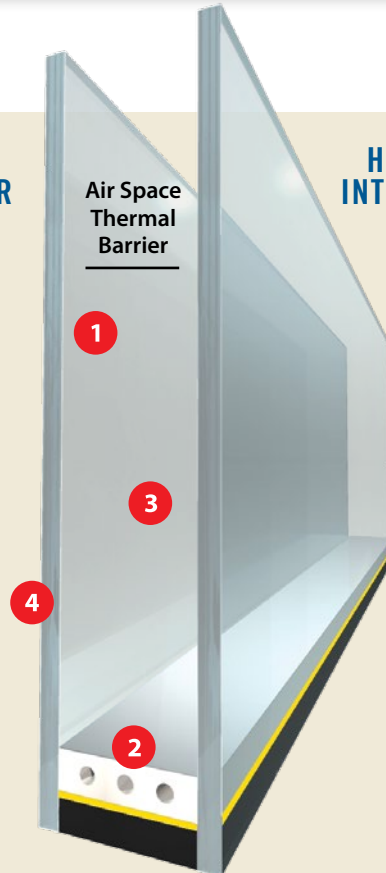
(Standard) INFINIT-e PLUS™ HIGH PERFORMANCE GLAZING SYSTEM

It's the science behind maximum energy efficiency and comfort.

- 1 A triple-layer silver metal coating, invisible to the human eye, reflects and effectively blocks much of the solar heat gain from a hot summer sun.
- 2 Patented Platinum Elite™ spacer slows down heat and cold transfer through the window.
- 3 Optional Argon Gas between the panes of glass slows the transfer of heat through the window.
- 4 Easy-clean coating on the outside glass helps your windows stay cleaner longer.

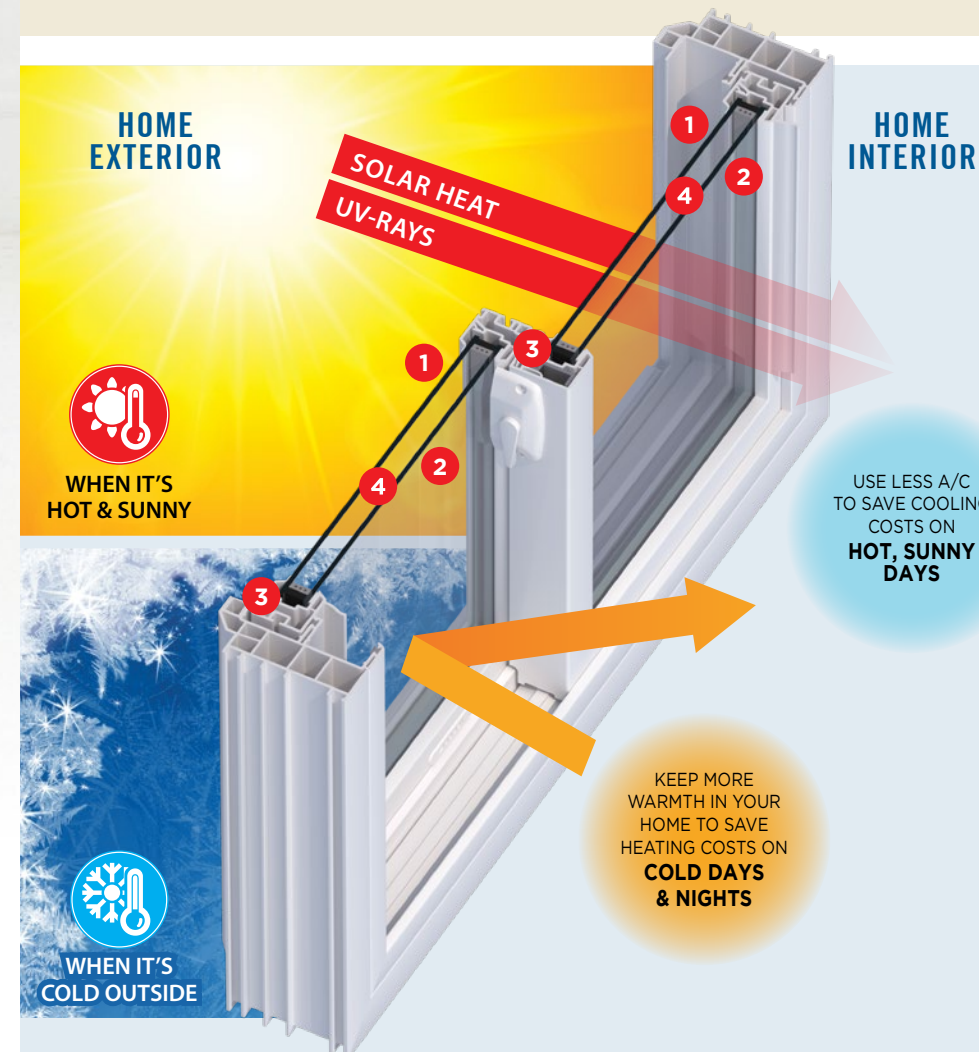
HOME EXTERIOR

HOME INTERIOR



HOME EXTERIOR

HOME INTERIOR



(Optional) QUADRATHERM™ ULTIMATE DUAL PANE INSULATION SYSTEM

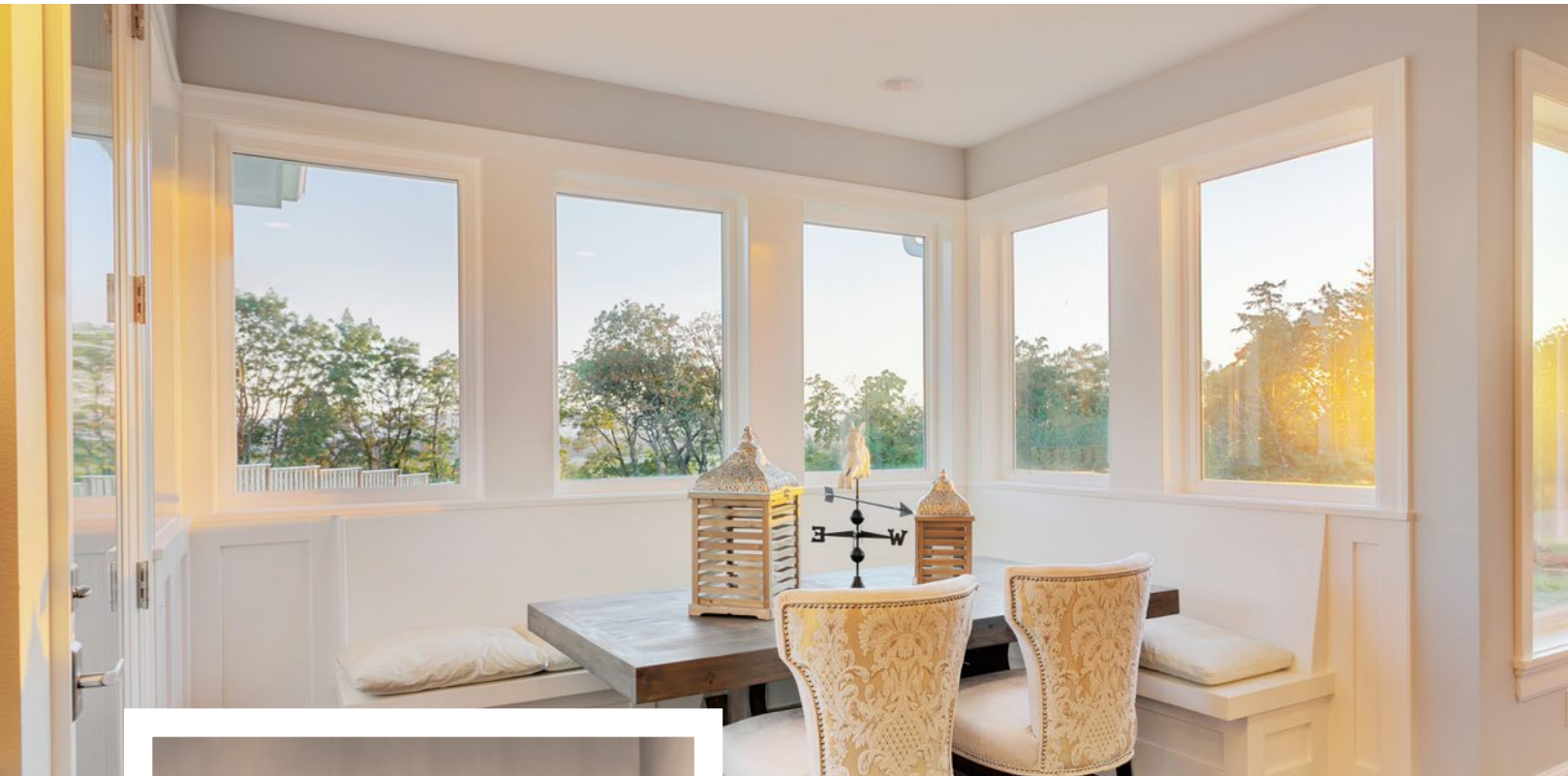
The industry's most energy efficient dual pane window.

- 1 Patented multi-layer solar reflective coating on the outside glass provides the ultimate defense against solar heat gain.
- 2 Patented multi-layer heat retention coating on the inside glass helps keep more warmth inside your home on cold days and nights.
- 3 Patented Platinum Elite™ spacer slows down heat and cold transfer through the window.
- 4 Argon Gas (included) between the panes of glass slows the transfer of heat through the window.

WITH CORONADO WINDOWS THE CHOICE IS YOURS



CORONADO
PREMIUM COMPANION VINYL WINDOWS



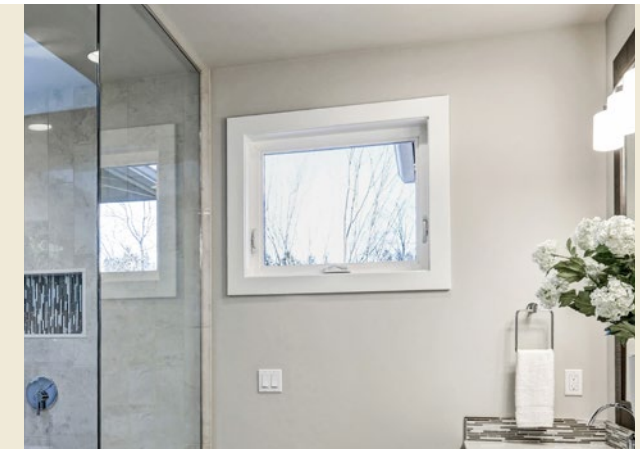
Bay and Bow Windows

Add a bay or a bow window to make any room feel larger, broaden your view and welcome in more light. Both styles allow combinations of fixed picture windows and operating windows.



Awning Windows

Hinged at the top and opening outward, awning windows let you enjoy ventilation even when it's raining. A foldaway crank handle makes opening and closing awning windows an easy, one-hand operation.



Double Hung and Double Slider Windows

Coronado's "double-acting" windows allow you to open both sashes for maximum ventilation; great for rooms with only one window. With double hung windows, which operate vertically, both sashes tilt in to make cleaning the outside glass exceptionally convenient.



Double slider windows allow both sashes to operate left and right and make ideal kitchen pass-through windows.



Casement Windows

Casement windows are hinged on the side and swing outward like a door. A smooth operating crank handle facilitates easy operation with one hand, perfect for harder to reach places like over countertops.

Garden Windows

Garden windows are a popular choice to brighten a kitchen or bathroom. They open the room to more sunlight and provide a perfect shelf for plants and décor.



Coronado windows have a 3 1/4" frame depth to accommodate the function of its operating styles and are the perfect companion to Anlin's Del Mar, Catalina and Panoramic series.

Exterior Color Options

Love the look of your home right down to the color of your window frames. With Anlin, you've got a lot of choices!



White
Exterior and Interior

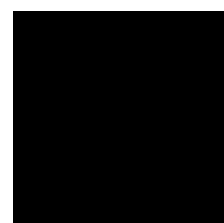


Tan
Exterior and Interior

THERMACOAT™

SOLAR REFLECTIVE COLORS

Exterior colors that bring out the designer in you.



Architectural Black



Architectural Bronze



Architectural Silver



Classic Gray



Espresso



Taupe



Red Pepper



Rose Wood



Desert Tan



Sandstone



Divine Wine



Forest Green

Colors shown are printed representations of ThermaCoat™ Solar Reflective Colors for comparison purposes only. For actual color, view ThermaCoat™ vinyl samples (provided by dealer) in natural daylight.



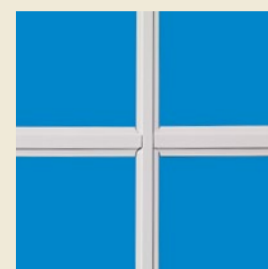
Grid Styles and Patterns

Grids allow you to create just the right architectural look that you want for your home.

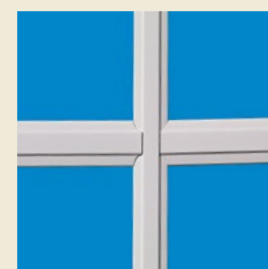
► Grid Styles



5/8" Flat



5/8" Sculptured

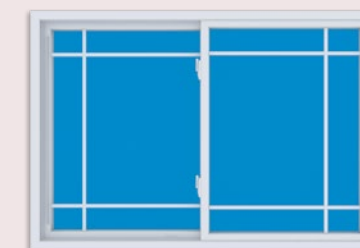


1" Sculptured

► Grid Patterns



Colonial



Perimeter



Queen Anne



Lock Options

Both lock types available on Coronado windows pass the forced entry test.

► Pull-Tight Cam Lock

(Standard in white or tan. Optional in bronze, brushed nickel, and polished brass.)

Pull the window sashes together for a weather tight seal.



Bronze



Brushed Nickel



Polished Brass

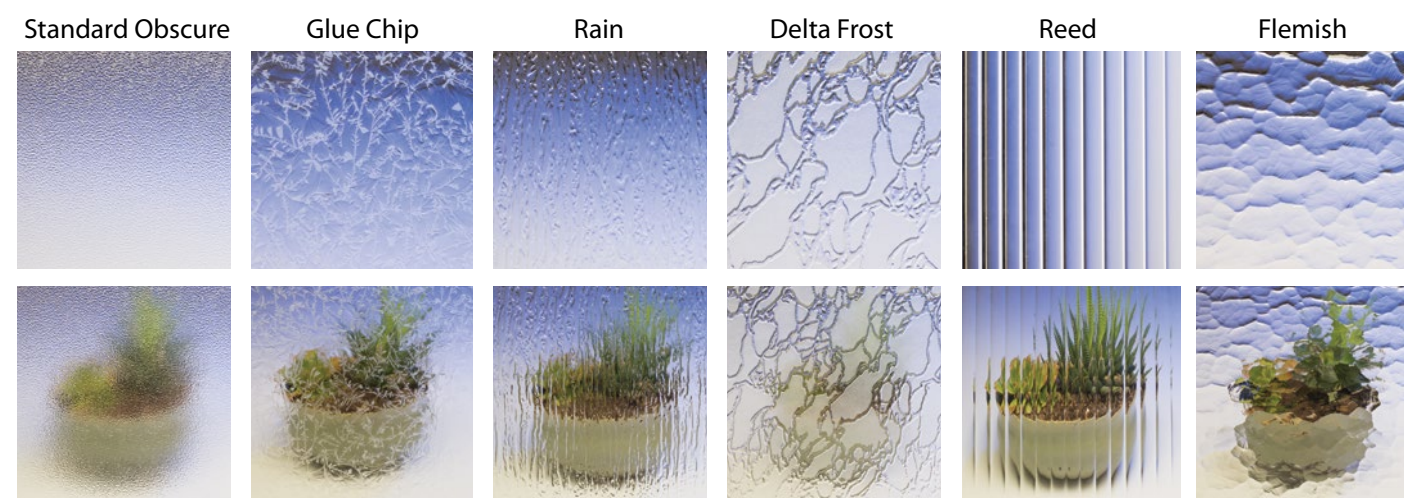
► True Action Lock

This optional system automatically locks when the sash is closed. Available in white, tan, bronze, brushed nickel, and polished brass.

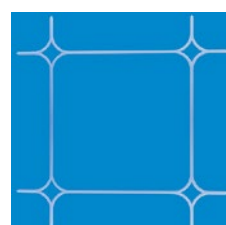


Decorative Glass Options

► Coronado windows are available with any of the following decorative glass patterns.



► Diamond cut decorative beveled glass, available in a variety of styles and patterns.

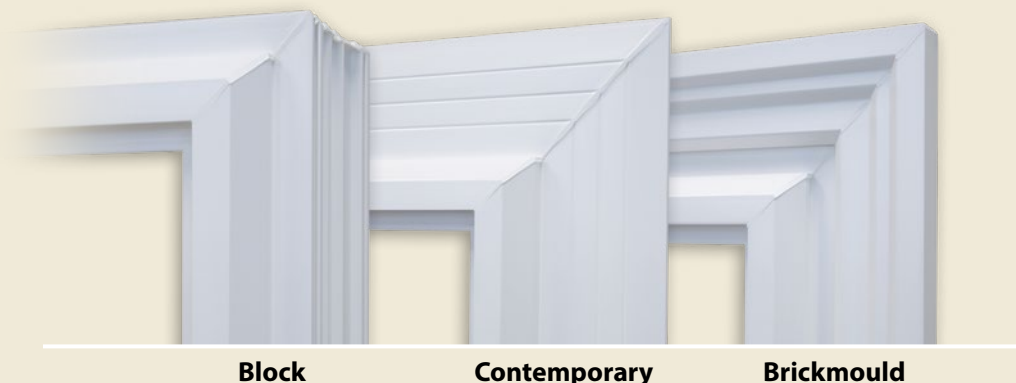


► Safety / Tempered Glass

All Anlin replacement windows can be ordered with optional tempered glass, which may reduce the potential for serious injury when broken.

Frame Options

Choose a frame style that gives your home the look you love.



Block

Contemporary

Brickmould

Tinted Solar Reflective Technology

The ultimate technology for combating extreme solar heat, tinted triple silver coating is engineered to reflect the sun where it beats the hottest. Whether it's the searing sun of the Arizona desert or anywhere west facing windows are exposed to a scorching afternoon sun, Tinted Solar Reflective Technology can dramatically reduce solar heat and lower cooling costs.

Sound Suppression Technology

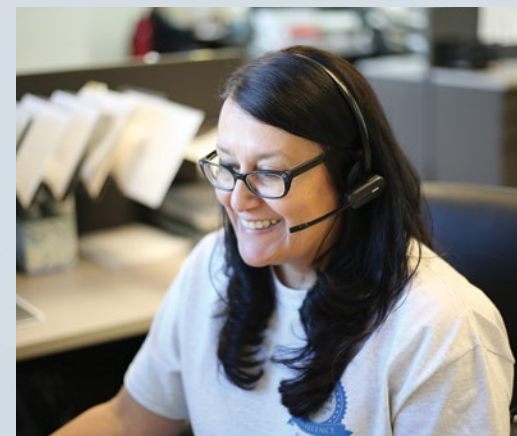
Many homeowners add Coronado's optional sound package. In addition to saving energy, the sound package greatly reduces the transmission of noise from the outside of your home to the inside, making your home even quieter. You may choose to add the sound package to windows throughout your home, or to windows facing a street or other sources of noise.





CORONADO
PREMIUM COMPANION VINYL WINDOWS

“From the way we build your windows and patio doors to the way we stand behind them – we look forward to creating an exceptional experience.”



Recognized for Manufacturing Excellence

Since Anlin Windows was founded in 1990, we've continually invested in leading edge product design, technology and manufacturing practices. As a result, Anlin Window Systems received numerous awards including Industrial Business of the Year by the U.S. House of Representatives and Top 100 U.S. Manufacturer by Window & Door Magazine.



All Anlin windows and doors are AAMA and NFRC certified, and ENERGY STAR qualified.





CORONADO

WINDOWS AT A GLANCE

- ▶ The beauty of even sight lines
- ▶ Superior quality and craftsmanship
- ▶ The industry's most inclusive warranty
- ▶ Exceptional U-Factor and SHGC ratings
- ▶ Designed and built for Western regions



Anlin Window Systems • 1665 Tollhouse Rd. • Clovis, CA 93611
800-287-7996 • www.anlin.com